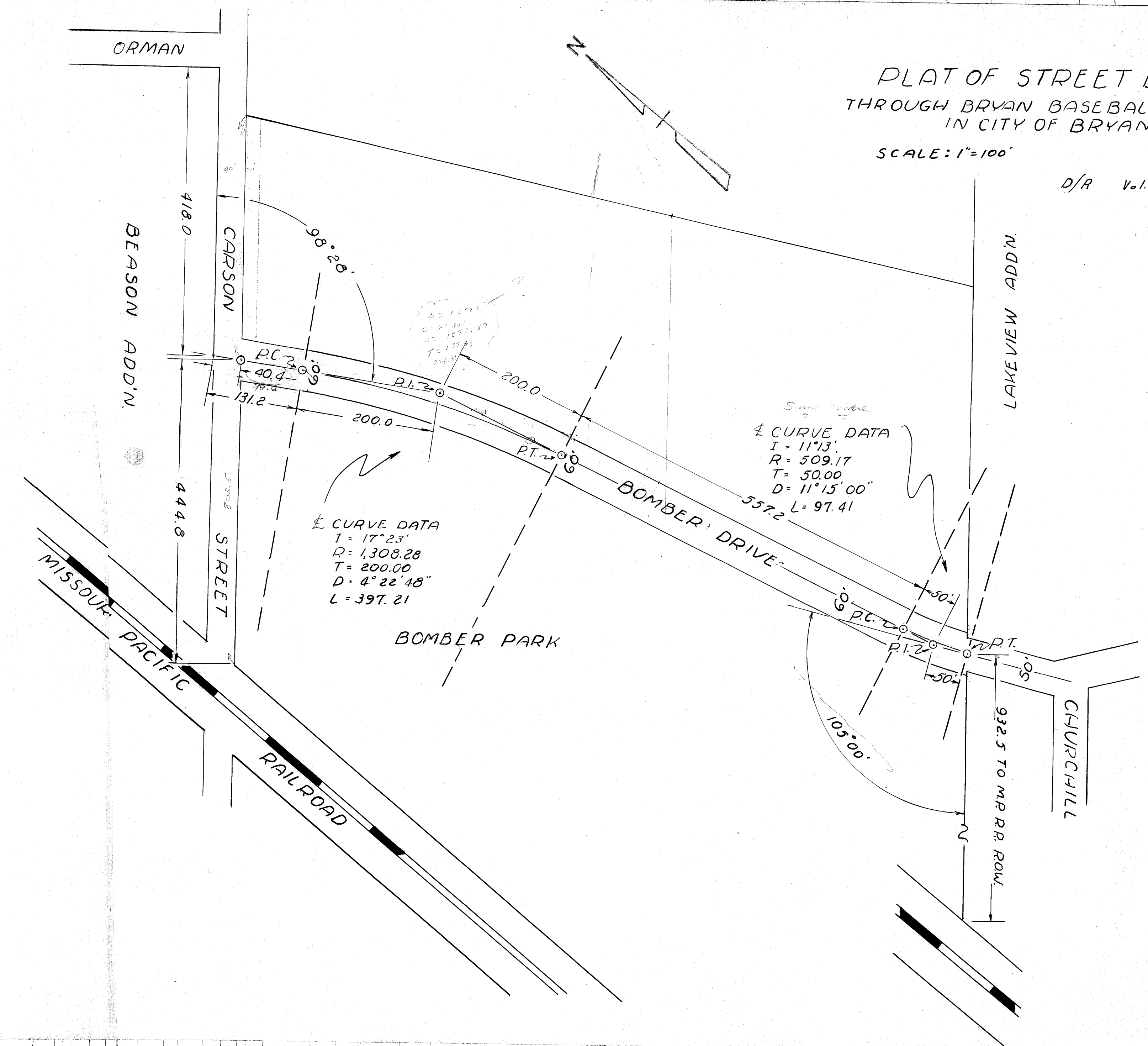
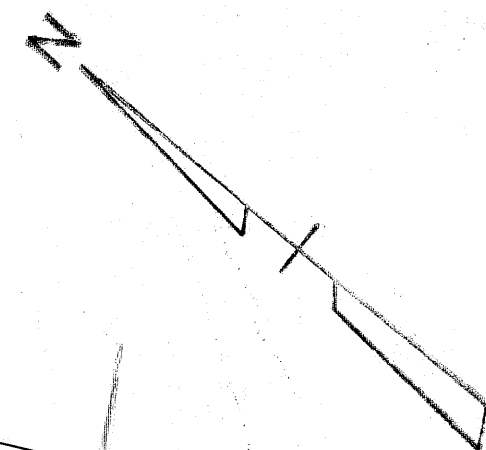


PLAT OF STREET DEDICATION THROUGH BRYAN BASEBALL ASS'N PROPERTY IN CITY OF BRYAN, TEXAS

SCALE: 1"=100'

AUG. 26, 1948

D/A Vol. 138 Page 287



§ CURVE DATA
I = 17° 23'
R = 1,308.28
T = 200.00
D = 4° 22' 18"
L = 397.21

§ CURVE DATA
I = 11° 13'
R = 509.17
T = 50.00
D = 11° 15' 00"
L = 97.41

AC 1247
01-27-37
BY 1273-37
T=139.75
244.2

copy on base and